

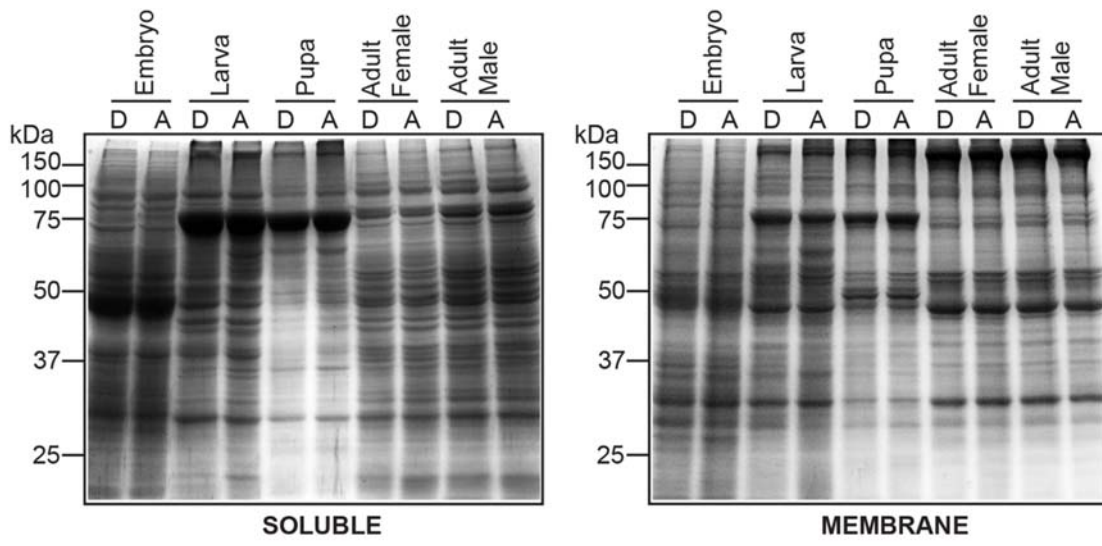
SUPPLEMENTARY INFORMATION

A SUPERFAMILY-WIDE ACTIVITY ATLAS OF SERINE HYDROLASES IN *DROSOPHILA MELANOGASTER*

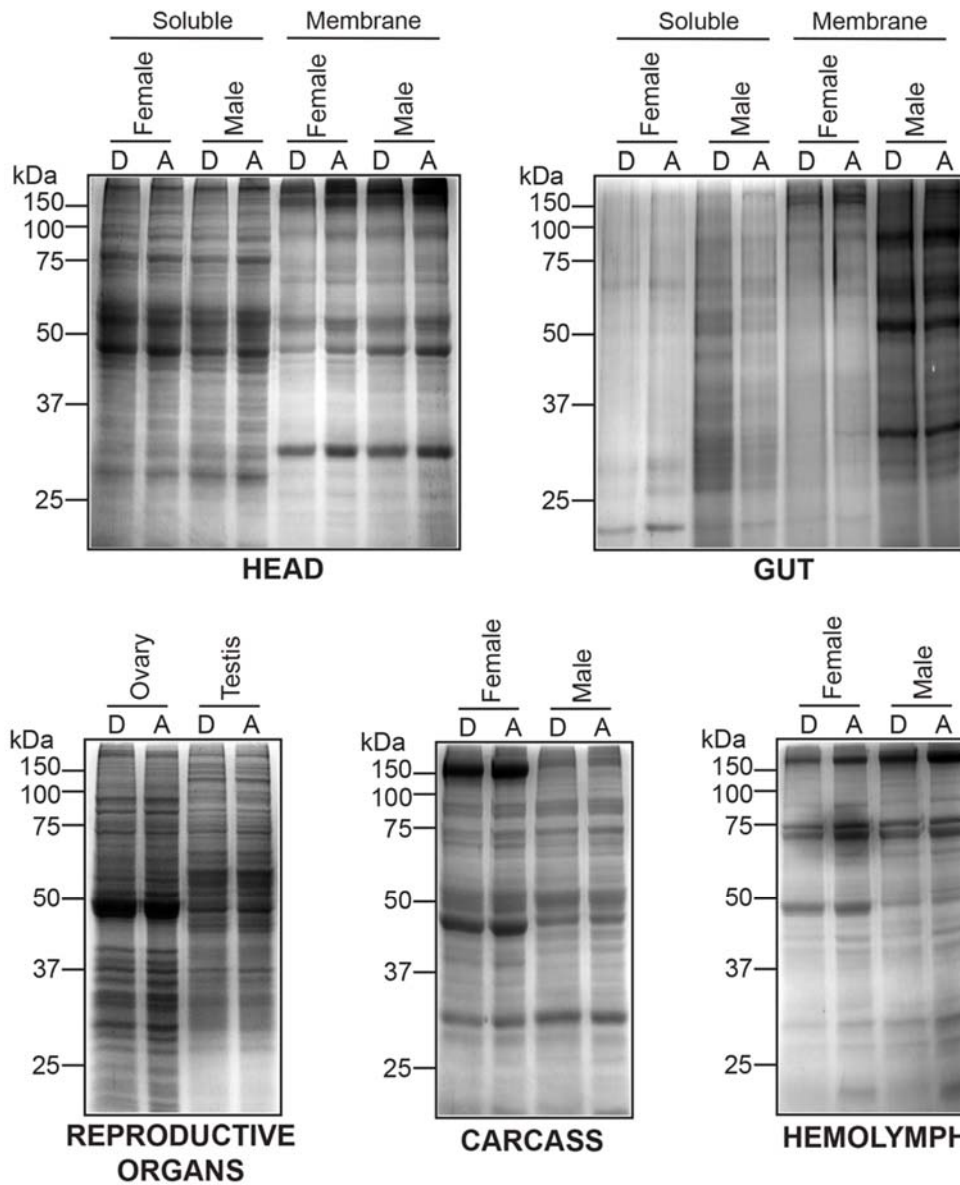
Kundan Kumar¹, Amol Mhetre¹, Girish Ratnaparkhi^{1,*}, Siddhesh S. Kamat^{1,*}

¹Department of Biology, Indian Institute of Science Education and Research (IISER) Pune,
Dr. Homi Bhabha Road, Pashan, Pune, Maharashtra, India 411008.

*To whom the correspondence should be made: siddhesh@iiserpune.ac.in or
girish@iiserpune.ac.in



Supplementary Figure 1. Coomassie staining of gel shown in **Figure 3A**, showing equal loading of active (A) and denatured (D) soluble (*left gel*) and membrane (*right gel*) lysates for respective developmental stages in flies.



Supplementary Figure 2. Coomassie staining of gel shown in **Figure 4**, showing equal loading of active (A) and denatured (D) lysates from different tissues and/or anatomical components in adult male and female flies.